

### Prism Greenhouse Series Overview

The Prism Greenhouse lights are designed to provide supplemental light in greenhouses to extend growing seasons and productivity. These lights feature highly efficient and reliable LED designs and a narrow profile that fits under a greenhouse rail to minimize plant shading. Three versions are available to meet a variety of needs and all versions can be operated at 277VAC or 480VAC and can be controlled or dimmed by standard lighting control systems or our own proprietary controller.

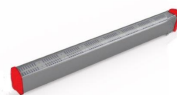
The Prism 340 is 80" long and operates at 340W from a built-in power supply and is well suited to medium high light supplementation applications

The Prism 170 Mini is 40" long and operates from at 170W from a built-in power supply and is targeted at moderate light supplementation applications

The Prism 340 Dual Mini consists of 2 40" lights connected by a cable and to a single power supply. The spacing between the lights can be adjusted. This configuration is targeted at moderate light supplementation applications and has the advantage of lower cost and 50% fewer AC connections vs the Prism 170 Mini.

### Prism Greenhouse Series Grow Lights

PR170 Mini 40" LED Light  
PR340 Dual Mini LED Light



The PR340 Dual Mini is 2ea PR170's operated from 1 Power supply. Covers 80".

PR340 80" LED Light



- Three Versions: PR340 80" length, PR170 Mini 40" length, PR340 Dual Mini which is 2ea PR170's operated from a single power supply.
- Each available in 277VAC or 480VAC versions.
- Maximum flexibility to arrange for desired light intensity.
- Spectrum optimized to promote premium flower development.
- Easy to install under the existing Greenhouse rails.
- High quality materials and manufactured in the USA.

### Specifications

	PR340	PR170 Mini	PR340 Dual Mini	
Dimensions	4.5"H x 3"W x 80" L	4.5"H x 3"W x 40" L	2ea Light Bars, each is 4.5"H x 3"W x 40"L	
Weight	11 lbs.	7 lbs.	11 lbs.	
Input Voltage	277 and 480 VAC	277 and 480 VAC	277 and 480 VAC	
AC Power (Max)	340W Dimmable	170W Dimmable	340W Dimmable	
PPF : $\mu\text{mol/s}$	830	415	830	
Efficacy: $\mu\text{mol/J}$	2.5	2.5	2.5	
Dimming	0-10V	0-10V	0-10V	
Fall Pattern diagrams				
Spectrum (s)	See Figure 2.0 on page 2	See Figure 2.0 on page 2	See Figure 2.0 on page 2	
Certifications	Designed for UL8800 IP66 DLC	Designed for UL 8800 IP66 DLC	Designed for UL 8800 IP65 DLC	

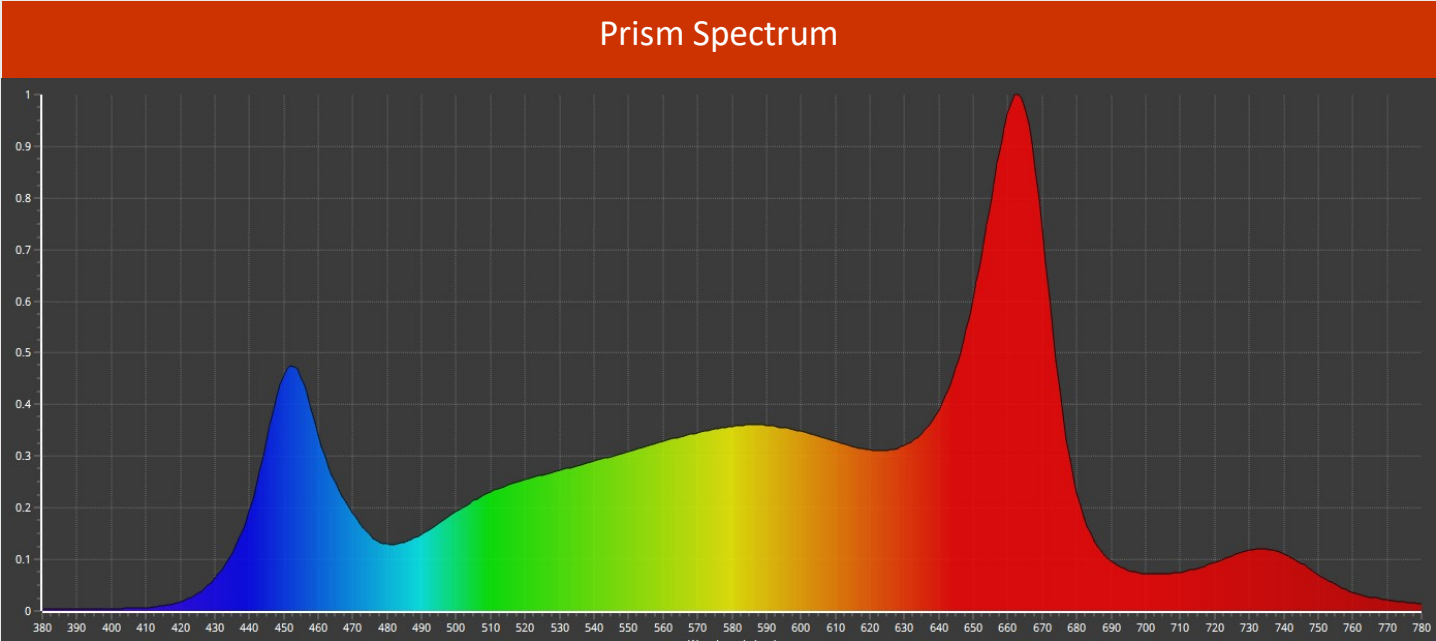


Figure 2.0